

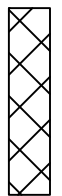
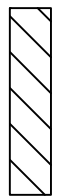



KEY NOTES

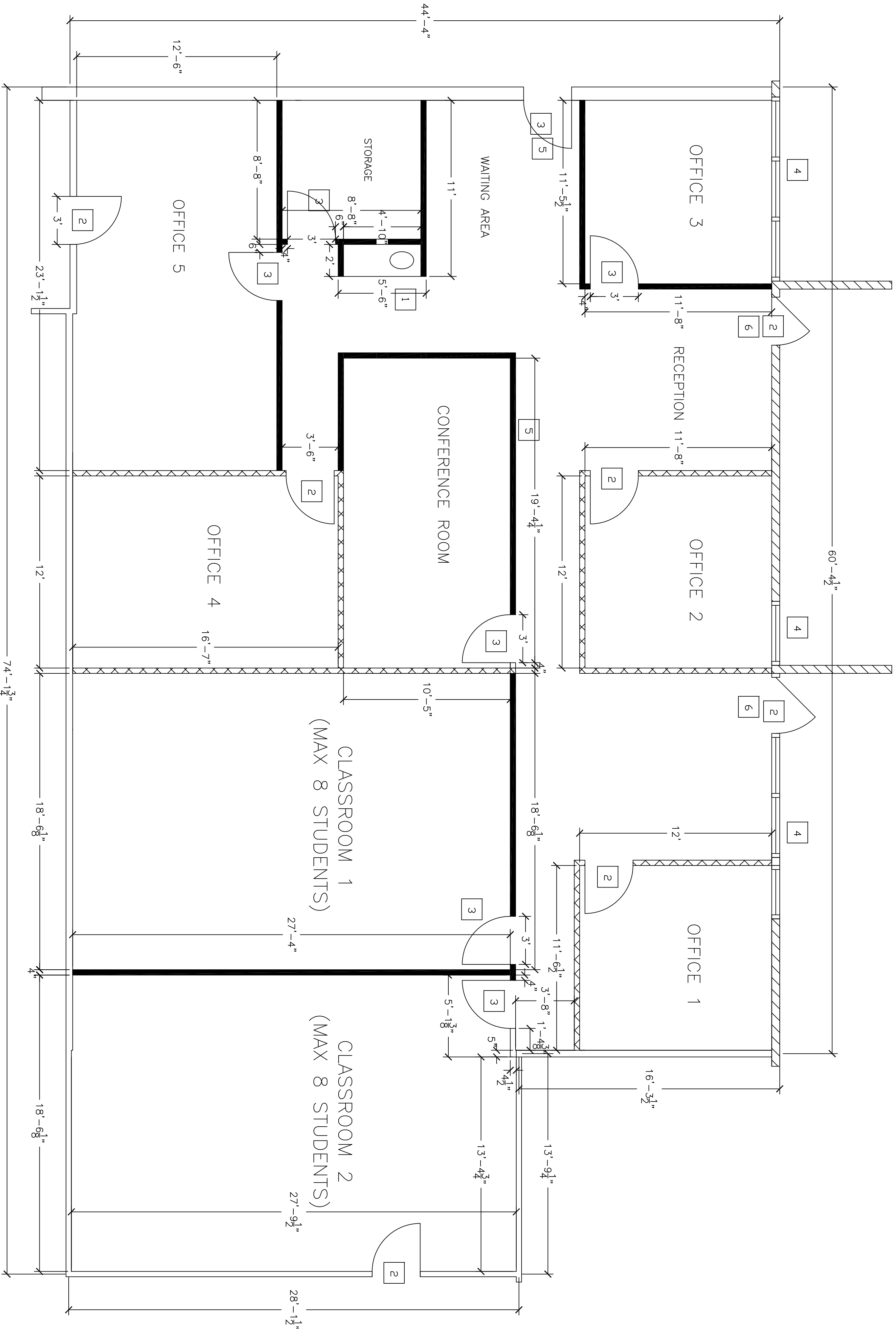
(THESE NOTES PERTAIN TO THIS SHEET ONLY)

- 1 STAINLESS STEEL SINK, PLUMB TO EXISTING HOT AND COLD WATER AND WASTE PIPING
- 2 EXISTING DOOR TO REMAIN
- 3 NEW DOOR
- 4 EXISTING WINDOW TO REMAIN
- 5 4'x6' GLASS PANEL
- 6 EXIT SIGNS (EXISTING)

If exterior hardware is modified, must comply with SAPD security ordinance

WALL LEGEND

-  EXISTING INTERIOR WALL (TO REMAIN)
-  EXISTING EXTERIOR WALL
-  EXISTING INTERIOR CORRIDOR WALL (TO REMAIN)
-  EXISTING INTERIOR SUITE DEMISING WALL (TO REMAIN)
-  NEW INTERIOR WALL



19 Sovente
Irvine, CA 92606
Tel: (949) 552-9927
Fax: (949) 552-9992

ISSUES/REVISIONS

NO.	DATE	DESCRIPTION
1	2/11/09	FIRST PLAN CHECK SUBMISSION
2	2/28/09	SECOND PLAN CHECK SUBMISSION

Brookhollow
Office Complex

American
Institute of
Massage
Therapy Tenant
Improvement

1506 Brookhollow
Suite 110 & 112 & 114
Santa Ana, CA 92705

Floor Plan

DRAWN BY: DATE: 02-28-09
LENA BEHRMANI
CHECKED BY:
PROJECT NUMBER: AS NOTED
SCALE:

A2.0

Floor Plan

SCALE: 1/4" = 1'-0"